

stephen lewis

**a long time**

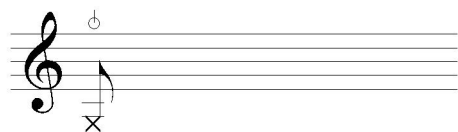
---

for string nonet  
(2010)

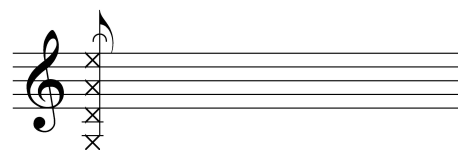


Special performance techniques in *a long time*:

Muted slap pizzicato: dampen the string loosely with the fingers so that a percussive attack with no pitch is produced.



Behind the bridge:





"Whether one calls oneself conservative or revolutionary,  
whether one composes in a conventional  
or a progressive manner, whether one tries to imitate  
old styles or is destined to express new ideas - one must be convinced  
of the infallibility of one's own fantasy  
and one must believe in one's own inspiration."

-Arnold Schoenberg



# a long time

stephen lewis

$\text{♩} = 40$  expansive  
*senza vibrato*

*espress. vibrato*

*pp* *ff* *fp* *fp* *pp* *gliss.*

Violin 1

*senza vibrato* *pp* *ppp* *pp* *gliss.* *gliss.*

Violin 2

*senza vibrato* *pp* *ppp* *pp* *gliss.* *gliss.*

Violin 3

*senza vibrato* *pp* *ppp* *pp* *gliss.* *gliss.*

Violin 4

*senza vibrato* *pp* *ppp* *pp* *gliss.* *gliss.*

Viola 1

*senza vibrato* *pp* *ppp* *pp* *gliss.* *gliss.*

Viola 2

*senza vibrato* *pp* *ppp* *pp* *gliss.* *gliss.*

Cello 1

*senza vibrato* *pp* *ppp* *pp* *gliss.* *gliss.*

Cello 2

*senza vibrato* *pp* *ppp* *pp* *gliss.* *gliss.*

Double Bass

*senza vibrato* *pp* *ppp* *pp* *gliss.* *gliss.*

*8va*

*espress.*

*3:2* *9:8* *5:4*

12

Vln. 1 *p* *f* *ppp* *mp* *senza vibrato* *8va espress. vibrato*

Vln. 2 *sul G calm* *pppp* *ppp* *ff* *senza vibrato* *vibrato*

Vln. 3 *sul G calm* *pppp* *ppp* *ff* *senza vibrato* *vibrato*

Vln. 4 *p* *f* *ppp* *p* *senza vibrato* *vibrato*

Vla. 1 *vibrato* *mp* *p* *p* *legato*

Vla. 2 *vibrato* *mp* *p* *p* *legato*

Vc. 1 *poco vibrato* *pp* *p* *legato* *3:2*

Vc. 2 *poco vibrato* *pp* *p* *legato* *3:2*

D.B. *poco vibrato* *pp* *p* *legato*



8<sup>va</sup>

Vln. 1

5:4 9:8 6:4

*mf* *f* *p* *f* *ff* *pp*

Vln. 2

*calm*  
*ppp*

Vln. 3

*sul G*  
*calm*  
*ppp*

Vln. 4

*relentless*  
*cresc.*

*mf* *pp*

Vla. 1

Vla. 2

*urgent*  
*fff*

Vc. 1

Vc. 2

D.B.

4 ♩ = 52

senza vibrato  
gliss.

**Vln. 1**  
f  
f dim.  
mp  
n

**Vln. 2**  
senza vibrato  
gliss.  
f  
f  
mp  
mf  
f  
mp  
p

**Vln. 3**  
senza vibrato  
gliss.  
3:2  
3:2  
f  
f dim.  
mp

**Vln. 4**  
senza vibrato  
gliss.  
f  
ff  
f  
dim.  
p

**Vla. 1**  
urgent  
ff  
ff  
dim. poco a poco

**Vla. 2**  
ff  
ff  
dim. poco a poco  
3:2

**Vc. 1**  
senza vibrato  
pp

**Vc. 2**  
senza vibrato  
pp

**D.B.**  
senza vibrato  
pp

27

Vln. 1

Vln. 2

Vln. 3

Vln. 4

Vla. 1

Vla. 2

Vc. 1

Vc. 2

D.B.

*rich, nuanced* *poco portamento* *poco sul pont.* *ord. punta d'arco*

*n* *mf* *f* *p* *p subito*

7:4 5:4 6:4 3:2 3:2 3:2 3:2

This musical score page contains eight staves for various instruments. The top four staves are for Violins 1, 2, 3, and 4. The bottom four staves are for Viola 1, Viola 2, Violoncello 1, and Double Bass. The score is divided into three measures. The first measure starts at measure 30. Dynamics include *pp*, *mf*, and *pp*. Performance markings include *legato*, *pizz.*, and *ff*. Rhythmic patterns are indicated by 3:2 and 5:3 ratios. The Double Bass part begins with a *pp* dynamic and includes a *legato* marking.

8<sup>va</sup>-----

♩ = 40

Vln. 1 *ff* *pizz.*

Vln. 2 *ff* *pizz.*

Vln. 3 *ff* *pizz.*

Vln. 4 *ff* *pizz.*

Vla. 1 *ff* *ff* *ff* *mf* *ff*

Vla. 2 *mp* *molto vibrato 3:2*

Vc. 1 *pp* *ff* *cut off abruptly*

Vc. 2 *pp* *ff* *cut off abruptly*

D.B. *pp*

33

5:4 6:4 5:4 6:4

This musical score page contains measures 36 through 40 for a string quartet and woodwinds. The instruments are Violin 1, Violin 2, Violin 3, Violin 4, Viola 1, Viola 2, Violoncello 1, Violoncello 2, and Double Bass. The score is written in treble clef for violins and violas, and bass clef for cellos and double bass. The key signature has one flat (B-flat major or D minor). The time signature is 3/4. The dynamics range from fortissimo (f) to pianissimo (pp). The woodwinds (Vla. 1 and 2) have specific articulation and phrasing markings. The string parts include various rhythmic patterns and dynamic markings. The Viola 2 part features complex rhythmic patterns with multi-measure rests and specific articulation markings. The Viola 1 and Cello parts have pizzicato markings. The Double Bass part has a 'senza vibrato' marking.

**Violin 1 (Vln. 1):** Measures 36-40. Dynamics: *f*, *mf*, *p*, *pp*.

**Violin 2 (Vln. 2):** Measures 36-40. Dynamics: *f*, *mf*, *p*, *pp*.

**Violin 3 (Vln. 3):** Measures 36-40. Dynamics: *f*, *mf*, *p*, *pp*.

**Violin 4 (Vln. 4):** Measures 36-40. Dynamics: *f*, *mf*, *p*, *pp*.

**Viola 1 (Vla. 1):** Measures 36-40. Dynamics: *f*, *mf*, *p*, *pp*.

**Viola 2 (Vla. 2):** Measures 36-40. Dynamics: *mf*, *mp*. Includes markings: *pesante poco rubato*, *3:2*, *5:4*, *6:4*, *7:4*, *3:2*.

**Violoncello 1 (Vc. 1):** Measures 36-40. Dynamics: *f*, *mp*, *mf*, *p*, *pp*. Includes marking: *pizz.*

**Violoncello 2 (Vc. 2):** Measures 36-40. Dynamics: *f*, *mp*, *mf*, *p*, *pp*. Includes marking: *pizz.*

**Double Bass (D.B.):** Measures 36-40. Dynamics: *pp*. Includes marking: *senza vibrato*.

*Rit. molto* ----- ♩ = 66  
*senza vibrato*

*arco portamento (as in Mahler)*

*p* > *pp*

*pizz.*  
*p*

*arco senza vibrato*  
*pp*

*arco*  
*pp*

*arco*  
*pp*

*arco*  
*pp* <> <>

*ord.*  
*mf*

*ord.*  
*p* <> <> <> *mf*

*pizz.*  
*mf*

*pizz.*  
*mf*

*vibrato espress.*  
*f* 5:4 > 7:4

*jittery*  
5:4 5:4

*calmer*  
3:2 *mp*

*deep, present sound*  
*p* <> <> *pp*

*(but not at all loud)*

This musical score page, numbered 10, features eight staves: Violin 1 (Vln. 1), Violin 2 (Vln. 2), Violin 3 (Vln. 3), Violin 4 (Vln. 4), Viola 1 (Vla. 1), Viola 2 (Vla. 2), Violoncello 1 (Vc. 1), Violoncello 2 (Vc. 2), and Double Bass (D.B.). The score is divided into three measures by vertical bar lines. The first measure contains measures 46-47, the second contains measures 48-49, and the third contains measures 50-51. The Violin 1 and 2 staves are mostly silent, with only measure 46 showing a few notes. The Violin 3 and 4 staves play a rhythmic pattern of eighth notes, with dynamic markings such as *mp*, *sfz*, *f*, and *mp*. The Viola 1 and 2 staves play a similar rhythmic pattern, with dynamic markings including *p*, *mf*, and *p*. The Violoncello 1 and 2 staves play a more complex rhythmic pattern, with dynamic markings such as *p*, *mf*, and *p*. The Double Bass staff is mostly silent, with only measure 46 showing a few notes. The score includes various performance instructions such as *pizz.*, *arco*, *sul pont.*, *sul pont. détaché*, and *arco sul pont. détaché*. It also features numerous dynamic markings (*p*, *mf*, *f*, *mp*, *sfz*) and articulation marks like accents and slurs. Rhythmic markings such as 6:4, 7:4, 5:4, and 3:2 are present throughout the score.



49

Vln. 1

Vln. 2

Vln. 3

Vln. 4

Vla. 1

Vla. 2

Vc. 1

Vc. 2

D.B.

*precipitato*

*f*

*f*

*5:3*

*6:4*

*arco*

*p*

*mf*

*mf*

*mf*

*f*

*pizz.*

*sfz*

*f*

*pizz.*

*f*

*f*

*pizz.*

*f*

*arco*

*mp*

*f*

*f*

*arco*

*3:2*

*5:4*

*pizz.*

*mp*

*sfz*

*f*

*sfz*

*arco*

*6:4*

*p*

*mf*

*p*

*3:2*

*6:4*

*3:2*

*6:4*

*3:2*

*6:4*

*3:2*

*6:4*

*3:2*

*6:4*

*3:2*

*6:4*

*3:2*

*f*

*f*

*pizz.*

*f*

*f*

*arco*

*6:4*

*6:4*

*6:4*

*pizz.*

*f*

*sfz*

*pizz.*

*f*

*arco*

*7:4*

*7:4*

*7:4*

*7:4*

*3:2*

*mp*

*f*

*mp*

*f*

*f*

*sfz*

*f*

*ff*

Vln. 1 *con bravura* *(ord.)* *sul pont. jittery* *mp*

Vln. 2 *con bravura* *mp*

Vln. 3 *arco* *mf* *molto vibrato*

Vln. 4

Vla. 1 *pizz.* *f* *arco* *molto vibrato* *mf*

Vla. 2

Vc. 1 *pizz.* *f* *arco* *molto vibrato* *mf*

Vc. 2 *fz*

D.B. *pizz.* *f*

Musical score for strings and woodwinds, measures 52-55. The score includes parts for Violins 1-4, Violas 1-2, Cellos 1-2, and Double Bass. It features various performance instructions such as *con bravura*, *arco*, *pizz.*, *molto vibrato*, *mp*, *mf*, and *fz*. The piece is in 2/4 time, with a key signature of one flat. Measure 52 starts with a 5:3 ratio, and measure 54 has a 5:4 ratio. Measure 55 features a 7:4 ratio. The woodwind parts include dynamic markings like *f* and *fz*.

56

Vln. 1 *pizz.* *mf* *f* *sfz* *arco* *pp*

Vln. 2 *mf* *f* *sfz* *ff*

Vln. 3 *cut off abruptly* *f* *cut off abruptly*

Vln. 4 *arco* *mf* *f* *pp*

Vla. 1 *cut off abruptly* *f* *cut off abruptly*

Vla. 2 *arco sul tasto* *mp*

Vc. 1 *cut off abruptly* *sfz* *f* *arco* *cut off abruptly*

Vc. 2 *arco sul tasto very even* *mp*

D.B.

Detailed description: This is a page of a musical score for a string ensemble, starting at measure 56. The score is divided into eight staves: Violins 1-4, Violas 1-2, and Double Bass. The music is in 2/4 time and features a variety of dynamics and articulations. Violin 1 starts with a *pizzicato* (*pizz.*) *mf* dynamic, moving to *f* and then *sfz* (sforzando), ending with *arco* *pp* (pianissimo). Violin 2 begins with *mf*, reaches *f*, and concludes with *sfz* and *ff* (fortissimo). Violin 3 has a *cut off abruptly* instruction, followed by *f*, and another *cut off abruptly*. Violin 4 plays *arco* with *mf* and *f* dynamics, ending with *pp*. Viola 1 has a *cut off abruptly* instruction, followed by *f*, and another *cut off abruptly*. Viola 2 plays *arco sul tasto* with a *mp* (mezzo-piano) dynamic. Violoncello 1 has a *cut off abruptly* instruction, followed by *sfz* and *f* dynamics, then *arco*, and finally *cut off abruptly*. Violoncello 2 plays *arco sul tasto very even* with a *mp* dynamic. The Double Bass part is mostly silent, indicated by a long horizontal line.

60

Vln. 1

Vln. 2

Vln. 3

Vln. 4

Vla. 1

Vla. 2

Vc. 1

Vc. 2

D.B.

*ff* *pp subito*

*f* *ff*

*pizz.* *f* *mp* *f* *mp*

*6:4* *cresc.* *6:4* *6:4* *5:4* *rubato* *f* *3:2* *5:4*

*pizz.* *sfz* *mp*

*7:4* *7:4* *p* *pizz.* *arco con sord. sul tasto* *pp*

*3:2* *5:4*

Measures 60-64. The score is for a string ensemble and double bass. It features complex rhythmic patterns with various time signatures (6:4, 7:4, 3:2, 5:4) and dynamic markings such as *ff*, *pp subito*, *f*, *mp*, *f*, *mp*, *pizz.*, *sfz*, *mp*, *p*, and *pp*. The Vln. 1 and Vln. 4 parts have a long melodic line starting at measure 60. The Vln. 2 part has a triplet of eighth notes in measure 61. The Vla. 1 part has a triplet of eighth notes in measure 61. The Vla. 2 part has a complex rhythmic pattern with various time signatures and a *rubato* marking. The Vc. 1 part has a triplet of eighth notes in measure 61. The Vc. 2 part has a triplet of eighth notes in measure 61. The D.B. part has a triplet of eighth notes in measure 61. The score is divided into four measures, with a key signature change from 2/4 to 3/4 at the end of measure 64.

64

Vln. 1 *detaché* *pp* *sul pont.*

Vln. 2 *pizz.* *p* 3:2

Vln. 3 *con sord. sul tasto* *pp*

Vln. 4 *detaché* *pp* 7:4 3:2 3:2

Vla. 1 *con sord. sul tasto* *pp*

Vla. 2 *pizz.* *p* 3:2 3:2

Vc. 1

Vc. 2

D.B. 5:3 3:2 5:3 3:2 5:3 3:2 3:2

Detailed description: This page of a musical score, numbered 15, contains measures 64 through 66. It features eight staves: Violin 1, Violin 2, Violin 3, Violin 4, Viola 1, Viola 2, Cello 1, Cello 2, and Double Bass. The Violin 1 part begins with a *detaché* marking and a *pp* dynamic, playing a melodic line with a *sul pont.* section. Violin 2 has a *pizz.* marking and a *p* dynamic, playing a rhythmic accompaniment with a 3:2 ratio. Violin 3 is marked *con sord. sul tasto* and *pp*. Violin 4 has a *detaché* marking and a *pp* dynamic, with a 7:4 ratio indicated. Viola 1 is marked *con sord. sul tasto* and *pp*. Viola 2 has a *pizz.* marking and a *p* dynamic, with 3:2 ratios. The Cello and Double Bass parts provide harmonic support with various ratios like 5:3 and 3:2. The score is written in 3/4 time and includes various musical notations such as slurs, dynamics, and performance instructions.

68

Vln. 1 *arco*  
*n*  $\rightrightarrows$  *mf*  $>$  *n*

Vln. 2 *arco*  
*n*  $\rightrightarrows$  *mf*  $>$  *n*

Vln. 3 *frozen*  
*ppp*

Vln. 4 *arco*  
*n*  $\rightrightarrows$  *mf*  $>$  *n*

Vla. 1 *frozen* *as before*  
*ppp* *p*

Vla. 2 *arco* *insistent*  
*mf*

Vc. 1 *arco*  
*n*  $<$  *mf*  $>$  *n*  $\rightrightarrows$  *mf*

Vc. 2 *arco*  
*n*  $<$  *mf*  $>$  *n*  $\rightrightarrows$  *mf*

D.B. *frozen* *as before*  
*ppp* *p*

5:3 3:2 5:4 5:4 5:3 3:2

74

Vln. 1 *con sord.*  
*p* *mp* *p* *pp*

Vln. 2 *fast, tight vibrato*  
*p* *mp* *sul G*

Vln. 3 *con sord.*  
*legato*  
*p sempre*

Vln. 4 *fast, tight vibrato*  
*mp*

Vla. 1 *f* *mf* *mp* *pizz.* *f*

Vla. 2 *f* *mf* *mp* *pizz.* *f*

Vc. 1 *con sord.*  
*p*

Vc. 2 *con sord.*  
*p*

D.B. *pizz.*

Detailed description: This page of a musical score, numbered 17, contains measures 74 through 80. It features eight staves: Violin 1 (Vln. 1), Violin 2 (Vln. 2), Violin 3 (Vln. 3), Violin 4 (Vln. 4), Viola 1 (Vla. 1), Viola 2 (Vla. 2), Violoncello 1 (Vc. 1), Violoncello 2 (Vc. 2), and Double Bass (D.B.). The score is written in a key with one flat (B-flat) and a 3/4 time signature. Vln. 1 begins with a rest in measure 74 and enters in measure 75 with a *con sord.* marking, playing a melodic line with dynamics *p*, *mp*, *p*, and *pp*. Vln. 2 plays a melodic line with *fast, tight vibrato* and dynamics *p* and *mp*, including a *sul G* instruction. Vln. 3 has a *con sord.* marking and plays a rhythmic pattern with *legato* and *p sempre* dynamics. Vln. 4 plays a melodic line with *fast, tight vibrato* and *mp* dynamics. Vla. 1 and Vla. 2 play complex rhythmic patterns with dynamics *f*, *mf*, *mp*, and *pizz.* (pizzicato). Vc. 1 and Vc. 2 play rhythmic patterns with *con sord.* markings and *p* dynamics. The D.B. part includes a *pizz.* marking. Various articulation marks like accents and slurs are present throughout the score.

This musical score page, numbered 18, features eight staves. The top four staves are for Violins 1, 2, 3, and 4, all in treble clef. The bottom four staves are for Viola 1, Viola 2, Cello 1, Cello 2, and Double Bass, all in bass clef. The score is divided into three measures. The first measure (measures 78-80) includes a first ending bracket for Vln. 1. The second measure (measures 81-83) contains various dynamics and performance markings. The third measure (measures 84-86) continues the musical development with specific articulation and dynamics. Key markings include *cresc.*, *sul G*, *heavy*, *lightly*, *detaché*, *sf*, *pp*, *f*, and *p*. Rhythmic values such as 5:4, 3:2, 6:4, and 7:4 are indicated above notes. The Double Bass staff (D.B.) is mostly silent, indicated by a horizontal line.



81

Vln. 1 *legato*  
*pp subito*  
*sfz*  
*sul pont.*

Vln. 2 *legato*  
*pp* *pp subito*

Vln. 3 *pp* *pp subito*  
*senza sord.*

Vln. 4 *boldly*  
*f* *legato*  
*pp subito*

Vla. 1 *con sord. sul tasto*  
*p*

Vla. 2 *arco con sord. sul tasto*  
*p*

Vc. 1 *sul tasto*  
*p* *espress. molto vibrato*  
*fp*

Vc. 2 *pizz. con sord.* *arco sul tasto*  
*p*

D.B. *pizz.* *arco con sord. sul tasto*  
*p*

81

85 *senza sord.*

Vln. 1 *pizz.* *f*

Vln. 2 *pizz.* *mf* *arco sul pont.* *p* *p* *f* *p* *mp*

Vln. 3 *sul pont.* *p* *f* *p* *pizz.* *sfz* *f* *sfz*

Vln. 4 *pizz.* *f*

Vla. 1 *poco cresc.*

Vla. 2 *poco cresc.*

Vc. 1 *sfz* *fp* *more and more impassioned* *f*

Vc. 2 *poco cresc.*

D.B. *poco cresc.* *poco*



93

Vln. 1 *arco molto vibrato*  
*f*

Vln. 2 *arco molto vibrato*  
*f*

Vln. 3 *f*

Vln. 4 *f*

Vla. 1 *molto vibrato*  
*f*

Vla. 2 *sfz* *sfz* *ff* *pizz.* 3:2

Vc. 1 7:4 7:4 7:4 7:4 7:4 7:4 7:4

Vc. 2 *col legno battuto*  
*ff* *sfz* 3:2

D.B. *f* 3:2

Detailed description of the musical score: The score is for measures 93-96. It features seven staves: Violin 1, Violin 2, Violin 3, Violin 4, Viola 1, Viola 2, and Double Bass.   
 - Violin 1 and 2: Play a melodic line starting in measure 93 with a forte (*f*) dynamic and *arco molto vibrato* instruction.   
 - Violin 3 and 4: Play a similar melodic line, also starting with *f*.   
 - Viola 1: Plays a melodic line with *molto vibrato* and *f*.   
 - Viola 2: Plays a rhythmic pattern of chords, marked *sfz* in measures 93-94 and *ff* in measure 95. A *pizz.* (pizzicato) marking is present in measure 95 with a 3:2 ratio.   
 - Cello 1: Plays a complex rhythmic pattern of chords, marked with 7:4 ratios in measures 93-96.   
 - Cello 2: Plays a rhythmic pattern of chords, marked *col legno battuto* (col legno battuto) and *ff* in measure 95. A *sfz* marking is present in measure 96 with a 3:2 ratio.   
 - Double Bass: Plays a rhythmic pattern of chords, marked *f* in measure 95 and has a 3:2 ratio in measure 96.

95  $\text{♩} = 60$

Vln. 1 *mf* *p*

Vln. 2 *p*

Vln. 3 *p*

Vln. 4 *p*

Vla. 1 *pizz.* *mp*

Vla. 2 *sfz* *sfz* *mp* *pp*

Vc. 1 *pp*

Vc. 2 *pizz.* *f* *pp* *arco*

D.B. *arco* *pp*

Detailed description: This page of a musical score contains measures 95 through 100. It features eight staves: Violin 1, Violin 2, Violin 3, Violin 4, Viola 1, Viola 2, Violoncello 1, Violoncello 2, and Double Bass. The score begins at measure 95 with a tempo marking of quarter note = 60. The key signature has one sharp (F#). The time signature changes from 3/4 to 4/4 at measure 97. The Violin parts play melodic lines with various articulations and dynamics, including accents and hairpins. The Viola 2 part features a prominent pizzicato section in measures 95-96, followed by arco playing in measures 97-100. The Violoncello parts provide harmonic support with sustained notes and rhythmic patterns. The Double Bass part plays a steady accompaniment with triplets and sustained notes. Dynamics range from fortissimo (ff) to pianissimo (pp).

101

Vln. 1 *pp* 3:2

Vln. 2 *pp*

Vln. 3 *p* 6:4 *pp* 6:4 5:4

Vln. 4 *pp*

Vla. 1 *arco espress.* *p* 3:2

Vla. 2 *espress.* *p*

Vc. 1 (gliss.) *ppp* *espress.* 3:2 *p*

Vc. 2 *pp*

D.B. (let go of F if necessary) *sul E*

112

Vln. 1

Vln. 2

Vln. 3

Vln. 4

Vla. 1

Vla. 2

Vc. 1

Vc. 2

D.B.

*espress.*  
*p*

*espress.*  
*p*

*espress.*  
*p*

*senza vibrato*  
*p*

*senza vibrato*  
*p*

*pp*

*pp*





# Allargando

(following vln. 2's  
rubato)

♩ = 66

128

Vln. 1 *pizz.* *sfz* *ff* *f* *arco marcato* *boldly*

Vln. 2 *3:2* *5:4* *boldly* *f* *5:3* *3:2* *3:2* *5:3* *3:2* *3:2* *5:3* *3:2*

Vln. 3 *pizz.* *f* *ff* *f*

Vln. 4 *pizz.* *f* *ff* *f*

Vla. 1 *pizz.* *mf* *f* *ff* *f*

Vla. 2 *pizz.* *mf* *f* *ff* *f*

Vc. 1 *f* *ff* *f*

Vc. 2 *f* *ff* *f*

D.B. *f* *ff* *f*

7:4 7:4

132

Vln. 1 *detaché*

Vln. 2 *5:3* *5:3* *3:2* *3:2* *5:3*

Vln. 3 *arco* *p* *boldly* *f*

Vln. 4 *arco* *p* *f* *detaché*

Vla. 1 *f* *mf* *mf*

Vla. 2 *f* *mf* *mf*

Vc. 1 *f* *mf* *mf*

Vc. 2 *f* *mf* *mf*

D.B. *f* *mf* *arco* *mf*

Detailed description of the musical score: The score is for measures 132, 133, and 134.   
 - **Violin 1:** Measures 132-134 feature a melodic line with accents and a *detaché* marking at the end.   
 - **Violin 2:** Measures 132-134 feature a melodic line with accents and rhythmic markings *5:3*, *3:2*, and *5:3*.   
 - **Violin 3:** Measures 132-134 feature a melodic line with accents, *arco* marking, *p* dynamic, and *boldly* marking.   
 - **Violin 4:** Measures 132-134 feature a melodic line with accents, *arco* marking, *p* dynamic, *f* dynamic, and *detaché* marking.   
 - **Viola 1 & 2:** Measures 132-134 feature a rhythmic accompaniment with *f* and *mf* dynamics.   
 - **Cello 1 & 2:** Measures 132-134 feature a rhythmic accompaniment with *f* and *mf* dynamics.   
 - **Double Bass:** Measures 132-134 feature a rhythmic accompaniment with *f* and *mf* dynamics, and an *arco* marking in measure 134.

135

Vln. 1

Vln. 2

Vln. 3

Vln. 4

Vla. 1

Vla. 2

Vc. 1

Vc. 2

D.B.

*boldly*

*detaché*

*mp*

5:3

3:2

3:2

3:2

5:3

3:2

3:2

3:2

5:3

3:2

3:2

3:2

5:3

mp

mp

mp

mp

3:2

Detailed description: This page of a musical score contains staves for Violins 1-4, Violas 1-2, Cellos 1-2, and Double Bass. The Violin parts feature complex rhythmic patterns with various triplet markings (5:3, 3:2) and dynamic markings like 'boldly' and 'detaché'. The Viola and Cello parts are mostly silent, with a final measure marked 'mp'. The Double Bass part has a triplet marking (3:2) in the final measure.

138

Vln. 1

Vln. 2

Vln. 3

Vln. 4

Vla. 1

Vla. 2

Vc. 1

Vc. 2

D.B.

*detaché*

*arco*

*mf*

*f*

*sempre marcato relentless*

*f*

5:3 3:2 5:3 5:3 3:2 5:4 5:4 5:4 5:4

6:4 7:4 5:4

3:2 3:2

142 *detaché*

Vln. 1 *detaché* *vigorous*

Vln. 2 *vigorous* 5:4 5:4 5:4 5:4 5:4 5:4 5:4

Vln. 3 *detaché*

Vln. 4 *vigorous* 3:2

Vla. 1

Vla. 2 *arco* *relentless* *mp*

Vc. 1 *arco* *relentless* *mp*

Vc. 2 3:2 3:2

D.B. 3:2

Detailed description: This page of a musical score, numbered 31, covers measures 142 to 151. It features seven staves: Violin 1 (Vln. 1), Violin 2 (Vln. 2), Violin 3 (Vln. 3), Violin 4 (Vln. 4), Viola 1 (Vla. 1), Viola 2 (Vla. 2), and Violoncello/Double Bass (Vc. 1, Vc. 2, D.B.). The Violin parts are marked with *detaché* and *vigorous* dynamics. The Viola 2 part is marked *arco* *relentless* *mp*. The Violoncello parts are also marked *arco* *relentless* *mp*. Rhythmic markings include 5:4 and 3:2. The score is written in treble clef for Violins and bass clef for Violas and Double Bass. A vertical bar line is present between measures 146 and 147.

144

*sempre marcato*  
*relentless*

Vln. 1 *f*

Vln. 2 *f*

Vln. 3 *sempre marcato*  
*relentless*  
*f*

Vln. 4

Vla. 1 *arco*  
*relentless*  
*mp* *f* *mp*

Vla. 2 *mf* *mp* *f*

Vc. 1 *mf* *mp* *f*

Vc. 2

D.B. *mp*

**Violin 1 (Vln. 1):** Measures 148-154. Starts with *ff* and *sul pont.* markings. Dynamic markings include *mf*, *mf*, *f*, *mp*, *mf*, *mf*, and *mf*. Rhythmic groupings include 6:4, 3:2, 3:2, and 7:4.

**Violin 2 (Vln. 2):** Measures 148-154. Starts with *ff* and *sul pont.* markings. Dynamic markings include *mf*, *f*, *mf*, and *f*. Rhythmic groupings include 7:4 and 7:4. Marking *agitato* appears in measure 153.

**Violin 3 (Vln. 3):** Measures 148-154. Starts with *ff* and *sul pont.* markings. Dynamic markings include *mf*, *f*, *mf*, and *f*. Rhythmic groupings include 3:2 and 3:2. Marking *ord.* appears in measure 154.

**Violin 4 (Vln. 4):** Measures 148-154. Starts with *mp* and *cresc.* markings. Dynamic markings include *f* and *ff*. Marking *ord.* appears in measure 154.

**Viola 1 (Vla. 1):** Measures 148-154. Dynamic markings include *f*, *mp*, and *f*. Rhythmic groupings include 5:4, 3:2, 3:2, 3:2, and 3:2.

**Viola 2 (Vla. 2):** Measures 148-154. Dynamic markings include *mp* and *f*. Rhythmic groupings include 7:4 and 7:4.

**Violoncello 1 (Vc. 1):** Measures 148-154. Dynamic markings include *mp*, *f*, and *mp*. Rhythmic grouping 5:3 appears in measure 153.

**Violoncello 2 (Vc. 2):** Measures 148-154. Dynamic markings include *ff*, *mp*, *f*, *mp*, *f*, *mp*, *f*, *mp*, *f*, *mp*, and *f*. Rhythmic groupings include 9:8, 9:8, 9:8, and 9:8.

**Double Bass (D.B.):** Measures 148-154. Dynamic markings include *mf* and *mp*.

This musical score page, numbered 34, contains measures 151 through 153. It features a full string section (Violins 1-4, Violas 1-2, Cellos 1-2) and a Double Bass (D.B.). The score is written in treble clef for Violins and Violas, and bass clef for Cellos and Double Bass. The key signature has one sharp (F#). Measure 151 begins with a first ending bracket labeled 'ord.' and a forte (*ff*) dynamic. Violins 1, 2, and 3 play a melodic line with triplets and slurs, while Violin 4 plays a sustained note. The woodwinds (Viola 1, Viola 2, Cello 1, Cello 2, and D.B.) provide harmonic support with various rhythmic patterns and dynamics. Measure 152 shows a transition to a *sul pont.* section. Violins 1, 2, and 3 continue their melodic lines, with Violin 1 and 3 playing sixteenth-note patterns. Violin 4 and the woodwinds play more rhythmic accompaniment. Measure 153 continues the *sul pont.* section with complex rhythmic figures, including sixteenth-note runs and slurs. Dynamics vary throughout, from *ff* to *mp* and *f*. The score includes numerous performance markings such as slurs, accents, and dynamic hairpins.



154

Vln. 1  
7:4  
6:4  
sfz  
ord. ben tenuto marcato  
ff  
cresc.

Vln. 2  
sfz  
ord. ben tenuto marcato  
ff  
cresc.

Vln. 3  
7:4  
3:2  
3:2  
sfz  
ord. ben tenuto marcato  
ff p ff  
cresc.

Vln. 4  
6:4  
7:4  
sfz  
ord. ben tenuto marcato  
ff  
cresc.

Vla. 1  
f  
marcato, small separations  
ff  
3:2  
3:2  
3:2  
cresc.

Vla. 2  
3:2  
3:2  
3:2  
f mp f  
ff  
cresc.

Vc. 1  
7:4  
f mp f  
ff  
marcato, small separations  
5:4  
5:4  
5:4  
cresc.

Vc. 2  
9:8  
mp f mp f  
ff  
marcato, small separations  
cresc.

D.B.  
f  
ff  
marcato, small separations  
3:2  
3:2  
cresc.

This musical score page contains measures 158 through 162 for a string ensemble and double bass. The instruments are Vln. 1, Vln. 2, Vln. 3, Vln. 4, Vla. 1, Vla. 2, Vc. 1, Vc. 2, and D.B. The music is written in 3/4 time with a tempo of 60 beats per minute. The dynamic marking is *fff* (fortissimo). The score features complex rhythmic patterns, including triplets and 5:4 ratios, and various articulations such as accents and slurs. The key signature has one sharp (F#).

166

Vln. 1 *fff* *sobbing* *mf*

Vln. 2 *fff* *sobbing* *mf*

Vln. 3 *fff* *sobbing* *mf*

Vln. 4 *fff* *sobbing* *mf*

Vla. 1 *fff* *molto espress.* *f*

Vla. 2 *fff* *molto espress.* *f*

Vc. 1 *fff* *poco f*

Vc. 2 *fff* *poco f*

D.B. *fff* *poco f*

174

Vln. 1

Vln. 2

Vln. 3

Vln. 4

Vla. 1

Vla. 2

Vc. 1

Vc. 2

D.B.

7:4

3:2

5:4

*mp*

*mf*

*p dim.*

*rich*

*subsidng*

*mp*

*p*

*mp*

*p*

*mp*

*p*

Detailed description: This page of a musical score, numbered 38, contains measures 174 through 178. It features eight staves: Violins 1-4, Violas 1-2, Cellos 1-2, and Double Bass. The Violin parts (Vln. 1-4) are in treble clef and feature complex rhythmic patterns with 7:4 and 3:2 time signatures, and a 5:4 measure in the second system. Dynamics range from *mp* to *mf* and *p dim.*. The Viola parts (Vla. 1-2) are in treble and bass clefs, with dynamics *mf* and *mp*, and a *rich* marking. The Cello and Double Bass parts (Vc. 1-2, D.B.) are in bass clef, with dynamics *mp* and *p*. The score includes various musical notations such as slurs, accents, and dynamic markings.

♩ = 60 *follow viola solo*

180

Vln. 1

Vln. 2

Vln. 3

Vln. 4

Vla. 1

Vla. 2

Vc. 1

Vc. 2

D.B.

*pp* *ff*

*pp* *ff*

*pp* *ff*

*pp* *ff*

*mf* *mf*

*f*

*mf*

*pp*

*pp*

*mechanically*

*but not dully*

*with great passion*

*with rubato whenever desired*

3:2 5:4 3:2 3:2 7:4 6:4 3:2

188

Vln. 1

Vln. 2

Vln. 3

Vln. 4

Vla. 1

Vla. 2

Vc. 1

Vc. 2

D.B.

*poco stringendo*

*f*

*p*

*sf*

*p*

*fff*

*f*

*tr*

*veloce, quasi gliss.*

*jittery*

*thick*

*explosive*

*pp*

*pp*

*f*

*ff*

*mf*

*pp*

194

Vln. 1

Vln. 2

Vln. 3

Vln. 4

Vla. 1

Vla. 2

Vc. 1

Vc. 2

D.B.

*pp*

*pp*

*pp*

*pp*

*pp*

*ff* *harshly* *5:4* *5:4* *5:4* *3:2* *ff* *3:2* *3:2* *3:2* *5:4* *mf* *mp* *f* *6:4* *3:2* *ff* *pizz.*

*vigorous, pressing forward*

*ff* *f* *ff* *f* *simile*

198

Vln. 1

Vln. 2

Vln. 3

Vln. 4

Vla. 1

Vla. 2

Vc. 1

Vc. 2

D.B.

*arco* *pizz.* *arco* *sfz* *mp* *f* *sffz* *pesante* *f* *5:4* *pizz.* *sfz* *arco* *sul pont.* *6:4* *pizz.* *sfz* *arco* *detaché sul pont.* *mp*

Detailed description: This page of a musical score, numbered 42, contains staves for Violins 1-4, Viola 1-2, Violoncello 1-2, and Double Bass. The Violin parts (Vln. 1-4) feature long, sustained notes with a fermata over the first measure. The Viola 1 part (Vla. 1) is highly active, starting with a complex rhythmic pattern of eighth and sixteenth notes, including triplets and quintuplets. It includes various performance instructions such as *arco*, *pizz.*, *sfz*, *mp*, *f*, *sffz*, *pesante*, *arco*, *sul pont.*, and *arco detaché sul pont.*. Rhythmic markings like *3:2*, *5:4*, and *6:4* are present. The Viola 2 (Vla. 2), Violoncello 1 (Vc. 1), Violoncello 2 (Vc. 2), and Double Bass (D.B.) parts consist of long, sustained notes with a fermata over the first measure.



201

Vln. 1

Vln. 2

Vln. 3

Vln. 4

Vla. 1

Vla. 2

Vc. 1

Vc. 2

D.B.

*7:4*

*3:2*

*pizz.*

*sffz*

*f*

*arco pesante*

*arco détaché*

*5:4*

*sffz*

*mp*

*fff*

*ff*

*f*

*(sul C)*

*no gliss.*

*3:2*

*3:2*

*mf dim.*

*mp*

*raw, senza vibrato*

*f*

207

Vln. 1

Vln. 2

Vln. 3

Vln. 4

Vla. 1

Vla. 2

Vc. 1

Vc. 2

D.B.

*pesante* 5:4  
*f*  
*sfz*  
*sfz*  
*pizz.*  
*arco*  
*sfz*  
*pizz.*  
*ff*  
*arco sul pont.* 3:2  
*f*  
*ord. pesante* 5:4  
*mf*  
*sfz*  
*arco* 6:4  
*p*  
*earnestly*  
*p*  
*cresc.*

*mf*  
*mf*  
*mp*  
*pizz.*  
*f*  
*arco earnestly*  
*p*  
*cresc.*

214

Vln. 1

Vln. 2

Vln. 3

Vln. 4

Vla. 1

Vla. 2

Vc. 1

Vc. 2

D.B.

*f*

*piu f*

*p*

*pp*

3:2

3:2

7:4

3:2

3:2

For more information about Stephen Lewis and his music, please visit:  
[www.stephenlewiscomposer.com](http://www.stephenlewiscomposer.com)