

stephen lewis

concerto

for piano and chamber orchestra

Approximate duration: 22 minutes

List of instruments:

- Flute 1 (doubling piccolo/alto flute)
- Flute 2 (doubling piccolo/alto flute)
- E-flat clarinet
- B-flat clarinet (doubling bass clarinet)
- Soprano/baritone saxophone
- Bassoon
- Percussion (suspended cymbal, two gongs, four wood-blocks, one snare drum, three tom-toms, one concert bass drum, one pedal bass drum)
- Accordion
- Solo piano
- Violin 1 and 2
- Viola 1 and 2
- Cello 1 and 2
- Double bass 1 and 2

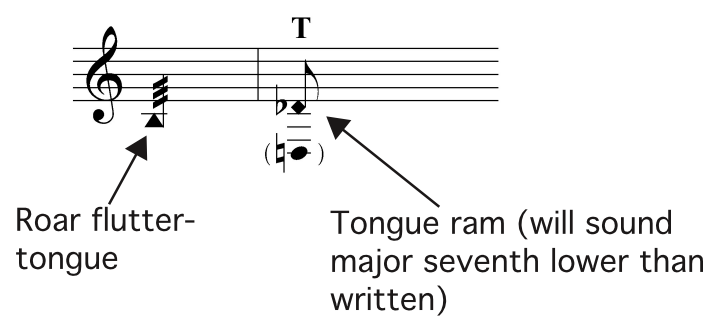
Every player besides the pianist, accordionist, and percussionist also plays on harmonica. Each player will have a blues harmonica either in A, B-flat, C, D, E, F, or G. The range of the harmonicas is four octaves, starting around middle C and going up. Exhaling will produce the tonic triad, and inhaling will produce the dominant seventh of the key of the harmonica. The actual pitches sounding are written out in the score. There are two general techniques for playing the harmonica in this piece:

1) Alternating exhaling and inhaling over several reeds, producing alternating tonic and dominant seventh chords.

2) Blowing very softly only in the highest (furthest right, like a keyboard) reed - this technique is only found in the first movement

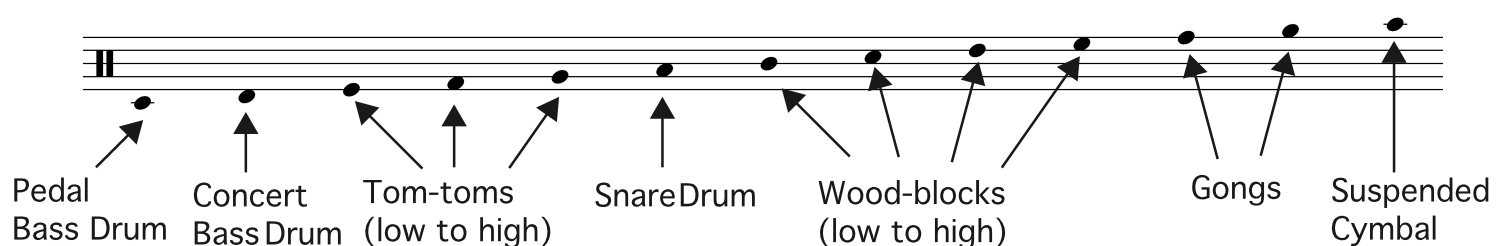
Specific notes for different instruments:

Flutes:



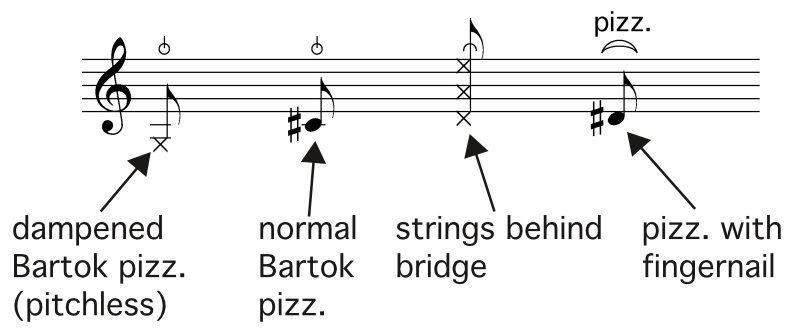
The image shows a musical staff with a treble clef. On the left, there is a triplet of eighth notes with a 'Roar flutter-tongue' label and an arrow pointing to the notes. On the right, there is a single eighth note with a 'T' above it and a 'Tongue ram (will sound major seventh lower than written)' label with an arrow pointing to the note.

Percussion Map:

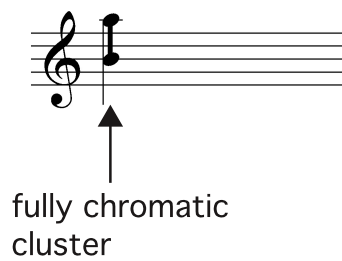


The image shows a horizontal line representing a percussion map. It is divided into sections by vertical lines. From left to right, the sections are: Pedal Bass Drum, Concert Bass Drum, Tom-toms (low to high), Snare Drum, Wood-blocks (low to high), Gongs, and Suspended Cymbal. Arrows point from each label to its corresponding position on the line.

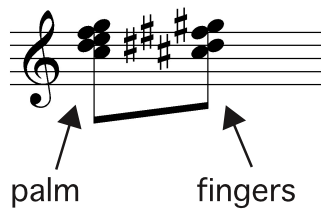
Strings:



Piano and Accordion:



Piano:



Cadenza in the "Intermezzo":

This cadenza is for the right foot and the pedal. Each note should be struck so strongly that its tone is harsh and metallic. The pedal on each note should be repeatedly released very quickly and retaken again immediately, thus only dampening the fundamental vibration while retaining the partials above it. This should be a gradual process, from a normal piano tone, through various partials being brought to the fore, to silence. Attempts should be made to create new harmonies between the partials of multiple pitches. At the end of the cadenza, the pianist should hear the partial interference between each chord before striking the next. Here, the piano transcends itself, and the apparent sound get louder before it decays again.

Dynamics:

ppp → *fff* are all controlled, beautiful sounds.

pppp and *ffff* are out of control, dangerous sounds.

concerto

for piano and chamber orchestra

I. fanfare and rhapsody

stephen lewis

Allegro moderato e maestoso (♩ = ca. 84)

The score is divided into three systems, each with a tempo marking: **Allegro moderato e maestoso (♩ = ca. 84)**.

System 1: Includes Flute 1, Flute 2, Clarinet in E♭, Clarinet in B♭, Soprano Sax., Bassoon, Percussion, and Accordion. The woodwinds play melodic lines with various dynamics (ff, f, sfz, p, mp) and articulations (accents, slurs). The piano part features 15th and 16th fingering exercises. The accordion plays a rhythmic accompaniment.

System 2: Features the Piano part, which continues with complex fingering and dynamic markings (sfz, p, f, mp). The woodwinds and strings are mostly silent in this system.

System 3: Features the Violin 1 and 2, Viola 1 and 2, Violoncello 1 and 2, and Contrabass 1 and 2. The strings play a sustained harmonic background with dynamic markings (sfz, mp, ppp) and articulations (pizz., arco).

Fl. 1
Fl. 2
Eb Cl.
Bb Cl.
S. Sax.
Bsn.

Perc.

Acc.

Pno.

Vln. 1

Vln. 2

Vla. 1

Vla. 2

Vc. 1

Vc. 2

Cb. 1

Cb. 2

Fl. 1
Fl. 2
Es Cl.
B♭ Cl.
S. Sax.
Bsn.

Measures 29-32. Flutes 1 and 2, E♭ Clarinet, B♭ Clarinet, Saxophone, and Bassoon. Dynamics include *f* and accents. Flutes 1 and 2 have a *f* dynamic starting at measure 30. E♭ Clarinet, B♭ Clarinet, and Saxophone also have a *f* dynamic starting at measure 30. Flutes 1 and 2 have a *f* dynamic starting at measure 31. E♭ Clarinet, B♭ Clarinet, and Saxophone also have a *f* dynamic starting at measure 31. Flutes 1 and 2 have a *f* dynamic starting at measure 32. E♭ Clarinet, B♭ Clarinet, and Saxophone also have a *f* dynamic starting at measure 32.

Perc.

Measures 29-32. Percussion. Dynamics include *ff* and *f*. Measure 29 has a *ff* dynamic. Measure 30 has a *ff* dynamic. Measure 31 has a *f* dynamic. Measure 32 has a *f* dynamic.

Acc.

Measures 29-32. Accompaniment. Dynamics include *fff*, *p*, and *fff*. Measure 29 has a *fff* dynamic. Measure 30 has a *p* dynamic. Measure 31 has a *fff* dynamic. Measure 32 has a *fff* dynamic.

Pno.

Measures 29-32. Piano. Dynamics include *fffz* and *f*. Measure 29 has a *fffz* dynamic. Measure 30 has a *fffz* dynamic. Measure 31 has a *fffz* dynamic. Measure 32 has a *f* dynamic.

Vln. 1

Measures 29-32. Violin 1. Dynamics include *p*, *fff*, *p*, *norm.*, and *fffz*. Measure 29 has a *p* dynamic. Measure 30 has a *fff* dynamic. Measure 31 has a *p* dynamic. Measure 32 has a *norm.* dynamic.

Vln. 2

Measures 29-32. Violin 2. Dynamics include *p*, *fff*, *p*, *norm.*, and *fffz*. Measure 29 has a *p* dynamic. Measure 30 has a *fff* dynamic. Measure 31 has a *p* dynamic. Measure 32 has a *norm.* dynamic.

Vla. 1

Measures 29-32. Viola 1. Dynamics include *p*, *fff*, *p*, *norm.*, and *fffz*. Measure 29 has a *p* dynamic. Measure 30 has a *fff* dynamic. Measure 31 has a *p* dynamic. Measure 32 has a *norm.* dynamic.

Vla. 2

Measures 29-32. Viola 2. Dynamics include *p*, *fff*, *p*, *norm.*, and *fffz*. Measure 29 has a *p* dynamic. Measure 30 has a *fff* dynamic. Measure 31 has a *p* dynamic. Measure 32 has a *norm.* dynamic.

Vc. 1

Measures 29-32. Violoncello 1. Dynamics include *p*, *fff*, *p*, *norm.*, and *fffz*. Measure 29 has a *p* dynamic. Measure 30 has a *fff* dynamic. Measure 31 has a *p* dynamic. Measure 32 has a *norm.* dynamic.

Vc. 2

Measures 29-32. Violoncello 2. Dynamics include *p*, *fff*, *p*, *norm.*, and *fffz*. Measure 29 has a *p* dynamic. Measure 30 has a *fff* dynamic. Measure 31 has a *p* dynamic. Measure 32 has a *norm.* dynamic.

Cb. 1
Cb. 2

Measures 29-32. Contrabass. Dynamics include *p*, *fff*, *p*, and *fffz*. Measure 29 has a *p* dynamic. Measure 30 has a *fff* dynamic. Measure 31 has a *p* dynamic. Measure 32 has a *fffz* dynamic.

36

Fl. 1 *To piccolo*

Fl. 2 *To piccolo*

E♭ Cl.

B♭ Cl.

S. Sax.

Bsn.

Perc.

Acc.

Pno. *(15^{ma})* *8^{va}*

Vln. 1 *8^{va}*

Vln. 2 *8^{va}*

Vla. 1 *f*

Vla. 2

Vc. 1 *f*

Vc. 2 *f*

Cb. 1

Cb. 2

This page of a musical score, numbered 10, contains measures 39 through 42. The score is arranged in a standard orchestral format with the following parts from top to bottom: Flute 1 (Fl. 1), Flute 2 (Fl. 2), E-flat Clarinet (Eb Cl.), Bass Clarinet (Bb Cl.), Saxophone (S. Sax.), Bassoon (Bsn.), Percussion (Perc.), Accordion (Acc.), Piano (Pno.), Violin 1 (Vln. 1), Violin 2 (Vln. 2), Viola 1 (Vla. 1), Viola 2 (Vla. 2), Violoncello 1 (Vc. 1), Violoncello 2 (Vc. 2), Contrabass 1 (Cb. 1), and Contrabass 2 (Cb. 2). The music is in 3/4 time and features a variety of dynamics including *f*, *ff*, *mp*, *mf*, and *sfz*. The woodwinds and strings play complex rhythmic patterns, often with slurs and accents. The percussion part includes a prominent snare drum line with dynamic markings like *ff* and *f*. The strings provide a rich harmonic texture with various articulations and dynamics. The score is written in a clear, professional notation style with detailed performance instructions.

This page of a musical score, numbered 11, contains staves for the following instruments: Fl. 1, Fl. 2, Eb Cl., Bb Cl., S. Sax., Bsn., Perc., Acc., Pno., Vln. 1, Vln. 2, Vla. 1, Vla. 2, Vc. 1, Vc. 2, Cb. 1, and Cb. 2. The score is divided into two systems. The first system (measures 43-48) features woodwinds and strings with various articulations and dynamics. The second system (measures 49-54) features a more complex texture with piano accompaniment, strings, and woodwinds. Key musical elements include:

- Flutes (Fl. 1 & 2):** Melodic lines with slurs and dynamic markings like *mf* and *ff*.
- Clarinets (Eb Cl. & Bb Cl.):** Harmonic support with triplets and quintuplets.
- Saxophone (S. Sax.):** Sustained notes.
- Bassoon (Bsn.):** A melodic line starting in the second system with dynamics *mf* and *ff*.
- Percussion (Perc.):** A rhythmic pattern starting in the second system with dynamics *sfz* and *ff*.
- Piano (Pno.):** A complex accompaniment with slurs, dynamics *ffz* and *f*, and fingering numbers (5, 8). *15^{ma}* and *8^{va}* are indicated for the right and left hands respectively.
- Violins (Vln. 1 & 2):** Melodic lines with dynamics *ff* and *mf*, and fingering numbers (5, 8).
- Violas (Vla. 1 & 2):** Melodic lines with dynamics *ff* and *mf*, and fingering numbers (5, 3, 7, 6, 3).
- Cellos and Double Basses (Vc. 1, Vc. 2, Cb. 1, Cb. 2):** Sustained notes with dynamics *mf* and *ff*.

This page of a musical score, numbered 13, contains measures 47 through 50. The score is arranged in a standard orchestral layout with the following parts from top to bottom:

- Fl. 1 & Fl. 2:** Flute parts with dynamics *p* and *f*.
- Es Cl. & Bb Cl.:** Clarinet parts. The Eb Clarinet part features sixteenth-note passages with dynamics *p* and *f*. The Bb Clarinet part has a forte (*ff*) dynamic.
- S. Sax. & Bsn.:** Saxophone and Bassoon parts. The Saxophone part has a forte (*ff*) dynamic. The Bassoon part has dynamics *f* and *fp*.
- Perc.:** Percussion part with various dynamics including *ff*, *f*, *sfz*, and *sf*.
- Acc.:** An empty staff for Accordion.
- Pno.:** Piano part with complex textures, including tremolos and sustained chords. Dynamics range from *sfz* to *ff*. Annotations include *15^{ma}* and *8^{va}*.
- Vln. 1 & Vln. 2:** Violin parts with dynamics *p* and *f*.
- Vla. 1 & Vla. 2:** Viola parts with dynamics *f* and *fp*.
- Vc. 1 & Vc. 2:** Violoncello parts with dynamics *f* and *fp*.
- Cb. 1 & Cb. 2:** Double Bass parts with dynamics *f* and *fp*.

The score includes various musical notations such as slurs, accents, and dynamic markings. Measure numbers 47, 48, 49, and 50 are clearly indicated at the beginning of their respective staves.

This page of a musical score, numbered 14, contains the following parts and markings:

- Fl. 1 & Fl. 2:** Flute parts with dynamics *mp* and *f*, and a slur spanning across the first two measures.
- Es. Cl.:** E-flat Clarinet part with a sixteenth-note triplet (marked '6') and a sixteenth-note quintuplet (marked '5').
- B♭ Cl.:** B-flat Clarinet part with a slur.
- S. Sax.:** Saxophone part with a sixteenth-note triplet (marked '7') and a sixteenth-note quintuplet (marked '7').
- Bsn.:** Bassoon part with a slur.
- Perc.:** Percussion part with a *pp* dynamic marking at the end of the first measure.
- Acc.:** Accordion part.
- Pno.:** Piano part with complex textures including sixteenth-note quintuplets (marked '5'), sixteenth-note triplets (marked '3'), and dynamic markings *fff*, *ffz*, and *mf*. It includes performance instructions like *15ma* and *8va*.
- Vln. 1 & Vln. 2:** Violin parts with dynamics *mf* and *f*, and a slur.
- Vla. 1 & Vla. 2:** Viola parts with a slur.
- Vc. 1 & Vc. 2:** Violoncello parts with dynamics *ff* and a slur.
- Cb. 1 & Cb. 2:** Double Bass parts with dynamics *ff* and a slur.

53

Fl. 1

Fl. 2

E♭ Cl.

B♭ Cl.

S. Sx.

Bsn.

53

Perc.

Acc.

53

Pno.

53

Vln. 1

Vln. 2

Vla. 1

Vla. 2

Vc. 1

Vc. 2

Cb. 1

Cb. 2

59

Fl. 1 *pp* 5:4 5

Fl. 2 *pp* 10:6

E♭ Cl. *pp*

B♭ Cl. *pp*

S. Sax. *pp* 7:4

Bsn. *pp* *ppp < mp >*

Perc. *mp pp >* 3 *mf* *p* *ppp <*

Acc.

Pno. *mf* 8va 3

Vln. 1 *legato pp*

Vln. 2 *legato pp*

Vla. 1 *legato pp* 6 3

Vla. 2 *legato pp*

Vc. 1 *legato s pp* 5 *ppp < mp*

Vc. 2 *legato pp* 5 5 *ppp < mp*

Cb. 1 *legato pp* 3 3 3 *ppp < mp*

Cb. 2 *legato pp* *ppp < mp*

63

Fl. 1 *pp* 5:4

Fl. 2 *pp* 10:6

E♭ Cl. *pp*

B♭ Cl. *pp*

S. Sax. *pp* 7:4

Bsn. *pp*

Perc. *mp* *mf* *fmp* *mf*

Acc. *mf* *p* *pp*

Pno. *p* *mf* *mp* *p* *f* *mp* *p* *pp* *ppp*

Vln. 1 *legato pp*

Vln. 2 *legato pp*

Vla. 1 *legato pp* 6 3

Vla. 2 *legato pp*

Vc. 1 *legato pp* 5

Vc. 2 *legato pp* 5

Cb. 1 *legato pp* 3 3

Cb. 2 *legato pp*

This page of a musical score, numbered 18, contains parts for various instruments. The score is divided into two systems of music, each with a 3/4 time signature. The first system includes parts for Flute 1 (Fl. 1), Flute 2 (Fl. 2), E-flat Clarinet (Eb Cl.), Bass Clarinet (Bb Cl.), Saxophone (S. Sax.), and Bassoon (Bsn.). The second system includes Percussion (Perc.), Accordion (Acc.), Piano (Pno.), Violin 1 (Vln. 1), Violin 2 (Vln. 2), Viola 1 (Vla. 1), Viola 2 (Vla. 2), Violoncello 1 (Vc. 1), Violoncello 2 (Vc. 2), Contrabass 1 (Cb. 1), and Contrabass 2 (Cb. 2). The score features a variety of musical notations, including dynamics such as *pp*, *p*, *mp*, *f*, *mf*, *mp*, and *sf*. It also includes performance instructions like *legato*, *sul E*, and *pp*. Numerical figures such as 5:4, 11:8, 11, 10:6, 7:4, 8:6, 8^{bb}, 5, 7, 6, 3, and 7 are placed above or below notes, likely indicating fingerings or specific rhythmic values. The score is written in a standard musical notation style with a clean, professional layout.

70

Fl. 1 *p* 5:4 5

Fl. 2 *p* 10:6

E♭ Cl. 5 5

B♭ Cl.

S. Sx.

Bsn.

Perc. *mp* 5 *f* 3 *sf*

Acc. *pp* *f* *mf* *<f* *f* *mf* *pp* *<* *>*

Pno. *f* 5 8

Vln. 1 *sul E* 3 *ppp*

Vln. 2 *legato* 9 *ppp*

Vla. 1 *ppp*

Vla. 2 *ppp*

Vc. 1 *ppp*

Vc. 2 *legato* *p* *ppp*

Cb. 1 3 3 3 To Harmonica

Cb. 2 7 To Harmonica

Detailed description: This page of a musical score, numbered 19, contains staves for various instruments. The woodwind section includes Flute 1 and 2, E-flat Clarinet, B-flat Clarinet, Soprano Saxophone, and Bassoon. The percussion part features a snare drum with dynamics *mp*, *f*, and *sf*. The accordion part shows a dynamic range from *pp* to *f*. The piano part includes both right and left hands with dynamics *f* and *ppp*. The string section consists of Violin 1 and 2, Viola 1 and 2, Violoncello 1 and 2, and Contrabass 1 and 2. The strings are marked with *ppp* and *legato*. The Contrabass parts include the instruction "To Harmonica". The score is written in a key signature of one sharp (F#) and a 4/4 time signature. Measure numbers 70, 71, 72, 73, and 74 are indicated at the beginning of their respective staves.

This page of a musical score contains measures 76 through 80. The instruments and their parts are as follows:

- Fl. 1:** Starts at measure 76 with a *ppp* dynamic, playing a melodic line with a 7-measure slur.
- Fl. 2:** Starts at measure 76 with a *p* dynamic, playing a melodic line with a 3-measure slur.
- Es. Cl.:** Starts at measure 76 with a *ppp* dynamic, playing a melodic line with a 7-measure slur.
- B♭ Cl.:** Starts at measure 76 with a *pp* dynamic, playing a melodic line with a 7-measure slur and a 3-measure slur.
- S. Sax.:** Remains silent throughout the page.
- Bsn.:** Starts at measure 76 with a *pp* dynamic, playing a melodic line with a 5-measure slur.
- Perc.:** Starts at measure 76 with a *p* dynamic, playing a rhythmic pattern. At measure 79, it changes to a *mf* dynamic with a 5-measure slur.
- Acc.:** Starts at measure 76 with a *p* dynamic, playing chords. At measure 78, it changes to a *ppp* dynamic. At measure 80, it changes to a dynamic range from *pp* to *ff*.
- Pno.:** Starts at measure 76 with a *p* dynamic, playing chords and a melodic line with a 3-measure slur. At measure 78, it changes to a *mf* dynamic. At measure 79, it changes to a *pp* dynamic. At measure 80, it changes to a dynamic range from *p* to *f*. There is an 8va marking above the right hand at measure 79.
- Vln. 1 & 2:** Remain silent throughout the page.
- Vla. 1 & 2:** Remain silent throughout the page.
- Vc. 1 & 2:** Remain silent throughout the page.
- Cb. 1 & 2:** Remain silent throughout the page.

70 Fl. 1 *sfz* *mf*

70 Fl. 2 *sfz* *mf*

70 Eb Cl. *mf*

70 Bb Cl. *mf*

70 S. Sx. *mf*

70 Bsn. *mf*

70 Perc. *ff* *f* *f* *mf* *f* *fff* *f*

70 Acc. *pp* *ff* *p* *sfz* *ff* *p* *f* *p* *fff*

70 Pno. *sfz* *mp* *ff* *f* *ff* *f*

70 Vln. 1 *mf* *fff* → scratch tone

70 Vln. 2 *mf* *fff* → scratch tone

70 Vla. 1 *mf* *fff* → scratch tone

70 Vla. 2 *mf* *fff* → scratch tone

70 Vc. 1 *mf*

70 Vc. 2 *mf*

70 Cb. 1

70 Cb. 2

83

Fl. 1 *pp* *ff*

Fl. 2 *pp* *ff*

Es. Cl. *pp*

Bs. Cl. *pp*

S. Sx.

Bsn. *ff*

Perc. *ff* *f*

Acc. *f* *p* *ff* *fff* *fff*

Pno. *mf* *sfz* *sfz* *sfz* *sfz* *p* *ff*

Vln. 1 *p* *ff*

Vln. 2 *p* *ff*

Vla. 1 *p* *ff*

Vla. 2 *p* *ff*

Vc. 1 *pizz.* *f*

Vc. 2 *pizz.* *f*

Cb. 1

Cb. 2

88

Fl. 1 *f*

Fl. 2 *f*

E♭ Cl. *f*

B♭ Cl. *f*

S. Sx. *f*

Bsn. *f*

Perc. *ff* *ff* *ff*

Acc.

Pno. *fff*

Vln. 1 *marcato* *ff*

Vln. 2 *marcato* *ff*

Vla. 1 *marcato* *ff*

Vla. 2 *marcato* *ff*

Vc. 1 *arco* *ff*

Vc. 2 *arco* *ff*

Cb. 1

Cb. 2

Detailed description: This page of a musical score covers measures 88 to 91. It features a full orchestral ensemble. The woodwinds (Flutes 1 & 2, E♭ Clarinet, B♭ Clarinet, Saxophone, Bassoon) and strings (Violins 1 & 2, Violas 1 & 2, Violoncellos 1 & 2, Contrabasses 1 & 2) are marked with a forte (*f*) dynamic. The percussion is marked fortissimo (*ff*). The piano part is marked fortississimo (*fff*). The score includes various musical notations such as slurs, accents, and dynamic markings. The key signature changes from one sharp (F#) to two sharps (F# and C#) between measures 89 and 90. The time signature changes from 3/4 to 5/16 and back to 3/4. The piece concludes in 4/4 time at measure 91.

This page of a musical score, numbered 26, contains measures 107 through 112. The score is arranged in a standard orchestral layout with the following parts from top to bottom: Flute 1 (Fl. 1), Flute 2 (Fl. 2), E-flat Clarinet (Eb Cl.), B-flat Clarinet (Bb Cl.), Saxophone (S. Sax.), Bassoon (Bsn.), Percussion (Perc.), Accordion (Acc.), Piano (Pno.), Violin 1 (Vln. 1), Violin 2 (Vln. 2), Viola 1 (Vla. 1), Viola 2 (Vla. 2), Violoncello 1 (Vc. 1), Violoncello 2 (Vc. 2), Contrabass 1 (Cb. 1), and Contrabass 2 (Cb. 2). The music is in 3/4 time and features a variety of dynamics including *f*, *mp*, *ff*, *mf*, and *p*. Performance instructions such as *non-legato*, *legato*, and *cresc.* are present. The piano part includes fingering numbers (3, 5, 7) and articulation marks like accents and slurs. The woodwind parts feature complex rhythmic patterns with triplets and slurs. The string parts provide a harmonic foundation with sustained chords and moving lines. The score concludes with a *mf* dynamic and a fermata-like marking.

110

Fl. 1 *<ff>* To Harmonica

Fl. 2 To Harmonica

E♭ Cl. To Harmonica

B♭ Cl. *ff* To Harmonica

S. Sx. To Harmonica

Bsn. 3 3 3 3 3 3 3

Perc. *<f>*

Acc. 110

Pno. *<fff>* 7 7 7 7 5 6 3 8^{va} 8^{vb}

Vln. 1 *ff*

Vln. 2 *ff*

Vla. 1

Vla. 2

Vc. 1 7 7 7

Vc. 2 5 5

Cb. 1 *<ff>* *p*

Cb. 2 *<ff>* *p*

116

Fl. 1 *pp* *mf* *pp*

Fl. 2 *pp* *mf* *pp*

E♭ Cl. *pp*

B♭ Cl. *pp* *mp* *pp*

S. Sax. *pp* *mp* *pp*

Bsn. *pp* *mp* *pp*

Perc. *f ff p f mf f mp p f*

Acc. *pp ff fp pp*

116 117 118

Pno. *f*

Vln. 1

Vln. 2

Vla. 1 *pp* *mf* *pp*

Vla. 2 *pp* *mf* *pp*

Vc. 1

Vc. 2

Cb. 1

Cb. 2

Fl. 1 *mp*

Fl. 2 *mp*

E♭ Cl.

B♭ Cl.

S. Sax.

Bsn. *p* *f*

Perc. *mf* *ff* *sfz* *f* *p*

Acc. *ff* *f*

Pno. *ff* *8va*

Vln. 1 *p* *f*

Vln. 2 *p* *f*

Vla. 1 *mp*

Vla. 2 *mp*

Vc. 1 *p* *f*

Vc. 2 *p* *f*

Cb. 1 *p* *f*

Cb. 2 *p* *f*

This page of a musical score covers measures 122, 123, and 124. The instruments and their parts are as follows:

- Fl. 1:** Treble clef, playing sixteenth-note chords with a *ff* dynamic and a *<* accent. A sixteenth-note slur is present.
- Fl. 2:** Treble clef, playing sixteenth-note chords with a *ff* dynamic and a *<* accent. A sixteenth-note slur is present.
- E♭ Cl.:** Treble clef, playing sixteenth-note chords with a *ff* dynamic.
- B♭ Cl.:** Treble clef, playing triplet eighth-note chords with a *ff* dynamic.
- S. Sax.:** Bass clef, playing sixteenth-note chords with a *ff* dynamic.
- Bsn.:** Bass clef, playing sixteenth-note chords with a *ff* dynamic.
- Perc.:** Percussion part with a *ff* dynamic and a *<* accent.
- Acc.:** Treble clef, playing sixteenth-note chords with a *fff* dynamic and a *<* accent.
- Pno.:** Grand staff (treble and bass clefs). The right hand features a melodic line with a 15th-measure slur and a 15th-measure slur. Dynamics include *sfz*, *ff*, *sfz*, *ffz*, *ff*, and *sfz*. The left hand features a bass line with an 8th-measure slur and dynamics including *sfz*, *ff*, *sfz*, *ffz*, *ff*, and *sfz*.
- Vln. 1 & 2:** Treble clef, playing sixteenth-note chords with a *ff* dynamic.
- Vla. 1 & 2:** Treble clef, playing sixteenth-note chords with a *ff* dynamic and a *<* accent.
- Vc. 1 & 2:** Treble clef, playing sixteenth-note chords with a *ff* dynamic.
- Cb. 1 & 2:** Bass clef, playing sixteenth-note chords with a *ff* dynamic.

This page of a musical score covers measures 125 to 127. The instrumentation includes Flute 1 (Fl. 1), Flute 2 (Fl. 2), E-flat Clarinet (Eb Cl.), B-flat Clarinet (Bb Cl.), Saxophone (S. Sax.), Bassoon (Bsn.), Percussion (Perc.), Accordion (Acc.), Piano (Pno.), Violin 1 (Vln. 1), Violin 2 (Vln. 2), Viola 1 (Vla. 1), Viola 2 (Vla. 2), Violoncello 1 (Vc. 1), Violoncello 2 (Vc. 2), Contrabass 1 (Cb. 1), and Contrabass 2 (Cb. 2). The score is written in a key signature of two sharps (D major or F# minor) and a common time signature. The woodwinds and strings play sustained chords, often with sixteenth-note patterns. The piano part features a complex melodic line with dynamic markings such as *ff*, *sffz*, and *pp*, and includes technical annotations like *15^{ma}*, *8^{va}*, and *8^{vb}*. The percussion part shows a simple rhythmic pattern. The accordion part consists of sustained chords with some triplet markings. The string parts include various textures, with the violas and cellos playing more active lines than the violins and contrabasses.

128

Fl. 1

Fl. 2

E♭ Cl.

B♭ Cl.

S. Sax.

Bsn.

Perc.

Acc.

Pno.

Vln. 1

Vln. 2

Vla. 1

Vla. 2

Vc. 1

Vc. 2

Cb. 1

Cb. 2

6

5

3

mf

ppp

3

Musical score for page 34, measures 130-131. The score includes staves for Fl. 1, Fl. 2, Eb Cl., Bb Cl., S. Sax., Bsn., Perc., Acc., Pno., Vln. 1, Vln. 2, Vla. 1, Vla. 2, Vc. 1, Vc. 2, Cb. 1, and Cb. 2. The piano part is the only one with musical notation.

Measures 130 and 131 are shown. The piano part (Pno.) is the only one with musical notation. The piano part consists of two staves: the upper staff is in treble clef and the lower staff is in bass clef. The upper staff contains a melodic line with eighth and sixteenth notes, and the lower staff contains a rhythmic accompaniment with eighth and sixteenth notes. The piano part is marked with a forte dynamic (f) and a tempo marking of 130. The piano part is the only one with musical notation.

This page of a musical score, numbered 35, contains staves for various instruments. The woodwind section includes Flute 1 (Fl. 1), Flute 2 (Fl. 2), E-flat Clarinet (Eb Cl.), B-flat Clarinet (Bb Cl.), Soprano Saxophone (S. Sax.), and Bassoon (Bsn.). The percussion part (Perc.) is shown with a single staff. The piano part (Pno.) is a grand staff with a treble and bass clef. The string section includes Violin 1 (Vln. 1), Violin 2 (Vln. 2), Viola 1 (Vla. 1), Viola 2 (Vla. 2), Violoncello 1 (Vc. 1), Violoncello 2 (Vc. 2), Contrabass 1 (Cb. 1), and Contrabass 2 (Cb. 2). The score is divided into three measures. The woodwinds, percussion, and strings are mostly silent, indicated by a horizontal line with a bar below it. The piano part features a complex rhythmic pattern of eighth and sixteenth notes, with a key signature of two flats and a common time signature. The number 132 is written above the first measure of the piano part.

135

Fl. 1

Fl. 2

E♭ Cl.

B♭ Cl.

S. Sx.

Bsn.

Perc.

135

Acc.

135

Pno.

135

Vln. 1

Vln. 2

Vla. 1

Vla. 2

Vc. 1

Vc. 2

Cb. 1

Cb. 2

II. intermezzo

Adagio (♩ = 40)

Alto Flute 1

Alto Flute 2

Clarinet in E-flat

Bass Clarinet

Bari Sax.

Bassoon

Percussion

Accordion

Adagio (♩ = 40)

Piano

Adagio (♩ = 40)

Violin 1

Violin 2

Viola 1

Viola 2

Cello 1

Cello 2

Contrabass 1

Contrabass 2

A. Fl. 1

A. Fl. 2

E-flat Cl.

B. Cl.

B. Sx.

Bsn.

Perc.

Acc.

Pno.

Vln. 1

Vln. 2

Vla. 1

Vla. 2

Vc. 1

Vc. 2

Cb. 1

Cb. 2

This page of a musical score includes the following parts and markings:

- A. Fl. 1:** Treble clef, starting at measure 17. Features a *simile* marking and a five-measure slur.
- A. Fl. 2:** Treble clef, starting at measure 17. Features a *simile* marking and a seven-measure slur.
- E-flat Cl., B. Cl., B. Sx., Bsn., Perc., Acc.:** All parts are silent (indicated by a horizontal line) from measure 17 to the end of the page.
- Pno.:** Grand staff (treble and bass clefs).
 - Measures 17-22: Treble clef has rests; bass clef has rests.
 - Measure 23: Treble clef has a triplet of eighth notes marked *p*.
 - Measures 24-25: Treble clef has a *legato* line of eighth notes with a seven-measure slur, marked *pp*.
 - Measures 24-25: Bass clef has a five-measure slur, marked *p*.
 - Measure 26: Treble clef has a half note marked *p*; bass clef has a half note marked *p*.
- Vln. 1, Vln. 2, Vla. 1, Cb. 1, Cb. 2:** All parts are silent (indicated by a horizontal line) from measure 17 to the end of the page.
- Vla. 2:** Bass clef, starting at measure 17. Features a *pp* marking and a long slur across measures 17-22.
- Vc. 1:** Bass clef, starting at measure 17. Features a *pp* marking and a slur across measures 17-22.

A little faster (♩= 80)

A. Fl. 1

A. Fl. 2

E-flat Cl.

B. Cl.

B. Sx.

Bsn.

Detailed description: This block contains the musical notation for six woodwind instruments. The A. Fl. 1 and A. Fl. 2 parts feature a melodic line with eighth-note patterns and triplets. The E-flat Cl. part has a final measure with a *ppp* dynamic marking. The B. Cl., B. Sx., and Bsn. parts are mostly rests.

Perc.

Acc.

Detailed description: This block contains the musical notation for Percussion and Accordion. Both parts consist of rests throughout the entire section.

A little faster (♩= 80)

Pno.

Detailed description: This block contains the musical notation for the Piano. It features a melodic line in the right hand with a *cantabile* marking and a triplet. The left hand has a bass line with octaves and a triplet. Dynamics include *p* and *ppp*.

A little faster (♩= 80)

Vln. 1

Vln. 2

Vla. 1

Vla. 2

Vc. 1

Vc. 2

Cb. 1

Cb. 2

Detailed description: This block contains the musical notation for eight string instruments. The Violin 1, Violin 2, Viola 1, Viola 2, and Violoncello 1 parts have a final measure with a *ppp* dynamic and a *non-vibrato* marking. The Violoncello 2, Contrabass 1, and Contrabass 2 parts are mostly rests.

A. Fl. 1

A. Fl. 2

E-flat Cl.

B. Cl.

B. Sx.

Bsn.

Perc.

Acc.

non dim.

Slower (♩ = ca. 72)

Pno.

mf

pp

8^{va}

7:6

15^{ma}

Slower (♩ = ca. 72)

normal vibrato

Vln. 1

Vln. 2

Vla. 1

Vla. 2

Vc. 1

Vc. 2

Cb. 1

Cb. 2

p

normal vibrato

détaché

mp

simile

3

5

Adagio (♩ = 40)

A. Fl. 1

A. Fl. 2

E-flat Cl.

B. Cl.

B. Sx.

Bsn.

Perc.

Acc.

Adagio (♩ = 40)

Pno.

Adagio (♩ = 40)

Vln. 1

Vln. 2

Vla. 1

Vla. 2

Vc. 1

Vc. 2

Cb. 1

Cb. 2

58

A. Fl. 1 *pppp* *pp*

A. Fl. 2 *pppp* *pp*

E-flat Cl.

B. Cl. *ppp* *pp*

B. Sx. *ppp* *pp*

Bsn. *ppp*

Perc. *p* *pp*

Acc.

Pno. *sf*

Vln. 1 *mp*

Vln. 2 *mp*

Vla. 1 *con sordino* *pppp* *senza sordino* *mp*

Vla. 2 *mp*

Vc. 1

Vc. 2

Cb. 1

Cb. 2

68

A. Fl. 1

A. Fl. 2

E-flat Cl. (8va)

B. Cl. *p*

B. Sx. *p*

Bsn. *p*

Perc.

Acc. *mf < fff* *ff*

Pno. *p* 7:6 8va 8vb

Vln. 1 *pp*

Vln. 2 *pp*

Vla. 1 *pp*

Vla. 2 *pp*

Vc. 1 *p*

Vc. 2 *mf < f* *p* *ff*

Cb. 1 *mf < f* *p* *ff*

Cb. 2 *mf < f* *p* *ff*

72

A. Fl. 1

A. Fl. 2

E-flat Cl.

B. Cl.

B. Sx.

Bsn.

pp

pp

pp

p < ff

ff

ff

72

Perc.

72

Acc.

mf *fff*

72

Pno.

p

fff

fff

72

Vln. 1

Vln. 2

Vla. 1

Vla. 2

Vc. 1

Vc. 2

Cb. 1

Cb. 2

pp

pp

pp

pp

p

p < ff

p < ff

p < ff

78

A. Fl. 1

A. Fl. 2

E-flat Cl.

B. Cl.

B. Sx.

Bsn.

78

Perc.

78

Acc.

78

Pno.

Lento moderato
(♩ = c. 60)

78

Vln. 1

Vln. 2

Vla. 1

Vla. 2

Vc. 1

Vc. 2

Cb. 1

Cb. 2

Lento moderato
(♩ = c. 60)

Adagio (♩ = 40)

A. Fl. 1

A. Fl. 2

E-flat Cl.

B. Cl.

B. Sx.

Bsn.

Perc.

Acc.

wire brush
drawn in circle

bellows only

ppp *ppp* *ppp*

f *f* *mf* *mp*

Adagio (♩ = 40)

Pno.

Adagio (♩ = 40)

Vln. 1

Vln. 2

Vla. 1

Vla. 2

Vc. 1

Vc. 2

Cb. 1

Cb. 2

pppp
con sordino

pppp
con sordino

pppp
con sordino

pppp
con sordino

pppp
con sordino

pppp
con sordino

pppp
con sordino

This page of a musical score, numbered 56, contains staves for various instruments. The woodwind section includes Flute 1 and 2, E-flat Clarinet, Bass Clarinet, Bass Saxophone, and Bassoon. The string section includes Violin 1 and 2, Viola 1 and 2, Violoncello 1 and 2, and Double Bass. Percussion and Accordion are also present. The score is written in 4/4 time with a key signature of one flat. It features complex rhythmic patterns, including triplets and sixteenth-note runs, with dynamic markings such as *fp*, *pp*, *ffz*, and *mp*. Performance instructions like *pizz.* and *arco sul pont.* are used for the double bass parts.

14

Fl. 1 *ff* *roar flutter* *ff* *roar flutter* *sfz* *T*

Fl. 2 *ff* *roar flutter* *ff* *roar flutter* *sfz* *T*

Es. Cl. *ff*

B. Cl. *ff* *sfz* *3* *5* *p*

B. Sx. *sfz* *sfz* *3* *3* *mf* *tenuto* *ff* *tongue slap* *ffz* *p*

Bsn. *sfz* *sfz* *3* *3* *ff* *sfz*

Perc. *fff*

Acc.

Pno. *fff* *f* *fff* *8va* *8vb*

Vln. 1 *ff* *p*

Vln. 2 *ff* *p*

Vla. 1 *ff* *p*

Vla. 2 *ff* *p*

Vc. 1 *sfz* *sfz* *sfz* *arco* *f* *pp* *f*

Vc. 2 *sfz* *sfz* *sfz* *sfz* *arco* *pp* *f* *arco*

Cb. 1 *sfz* *sfz* *sfz* *sfz* *pp* *f* *arco*

Cb. 2 *sfz* *sfz* *sfz* *sfz* *pp* *f*

This page of a musical score, numbered 59, contains staves for various instruments. The woodwind section includes Flute 1 and 2, E♭ Clarinet, Bass Clarinet, Bass Saxophone, and Bassoon. The percussion and accordion parts are present but mostly silent. The piano part features complex textures with triplets, quintuplets, and non-legato passages. The string section includes Violin 1 and 2, Viola 1 and 2, Violoncello 1 and 2, and Contrabass 1 and 2. The score is marked with various dynamics such as *ppp*, *f*, *mp*, *sfz*, and *p*, and includes performance instructions like *arco*, *pizz.*, and *non-legato*. The music is written in a 3/4 time signature with frequent changes in meter.

Very fast (♩=144-160 or faster)

Fl. 1 *mp*

Fl. 2 *mp*

E♭ Cl. *mp*

B. Cl. *f* *p* *sfz*

B. Sx. *ff* *p* *sfz*

Bsn. *f* *p* *sfz*

Perc. *f* *mp*

Acc. *p*

Pno. *glissando* *sfz* *mp legato*

Very fast (♩=144-160 or faster)

Vln. 1 *p*

Vln. 2 *p*

Vla. 1 *p*

Vla. 2 *arco molto sul pont.* *sfz*

Vc. 1 *arco* *f* *pizz.* *sfz*

Vc. 2 *arco* *f* *pizz.* *sfz*

Cb. 1 *arco* *f* *pizz.* *sfz*

Cb. 2 *arco* *f* *pizz.* *sfz*

Fl. 1 *ff* *p*

Fl. 2 *ff* *p*

E♭ Cl. *p*

B. Cl.

B. Sx. *f*

Bsn. *f*

Perc. *mp* *mf* *p*

Acc. *p* *fff*

Pno.

Vln. 1 *p*

Vln. 2 *p*

Vla. 1 *p*

Vla. 2 *sfz* *mf*

Vc. 1

Vc. 2

Cb. 1

Cb. 2

Fl. 1 *f* *sfz* *ff* *f* *pp*

Fl. 2 *f* *sfz* *ff* *f* *pp*

Es. Cl. *f* *sfz* *f* *pp*

B. Cl. *mf* *sfz*

B. Sx. *mf* *sfz*

Bsn. *mf* *sfz*

Perc. *mf* *sf*

Acc.

Half tempo (♩=72-80)

Pno. *mf*

Half tempo (♩=72-80)

Vln. 1 *f* *pizz.* *f*

Vln. 2 *f* *pizz.* *f*

Vla. 1 *f* *pizz.* *f*

Vla. 2 *sfz* *pizz.* *f*

Vc. 1 *arco* *fp*

Vc. 2 *arco* *fp*

Cb. 1 *arco* *fp*

Cb. 2 *arco* *fp*

Fl. 1
Fl. 2
E♭ Cl.
B. Cl.
B. Sx.
Bsn.

64

f

mf < *sfz*

Perc.

64

Acc.

64

Pno.

64

f

mp

ff

Vln. 1

64

f

pizz.

f

arco

f

Vln. 2

64

f

pizz.

f

Vla. 1

64

mp

pizz.

f

arco

mf

Vla. 2

64

pizz.

f

arco

mf

Vc. 1

64

f

arco

mp

mf

Vc. 2

64

f

arco

mp

mf

Cb. 1

64

f

arco

mp

mf

Cb. 2

64

f

arco

mp

mf

This page of a musical score, numbered 65, contains the following parts and markings:

- Fl. 1 & 2:** Flute parts with *ff* dynamics and sixteenth-note runs.
- Es. Cl.:** E-flat Clarinet part with *ff* dynamics and sixteenth-note runs.
- B. Cl. & B. Sx.:** Bass Clarinet and Bass Saxophone parts with *sfz* dynamics.
- Bsn.:** Bassoon part with *sfz* dynamics.
- Perc.:** Percussion part with *f* dynamics and a quintuplet.
- Acc.:** Accordion part.
- Pno.:** Piano part with *ff* dynamics, triplets, and sixteenth-note runs.
- Vln. 1 & 2:** Violin parts with *f* dynamics, *pizz.* (pizzicato), and *arco* (arco) markings.
- Vla. 1 & 2:** Viola parts with *f* dynamics, *pizz.*, and *arco* markings.
- Vc. 1 & 2:** Violoncello parts with *mf* dynamics and triplets.
- Cb. 1 & 2:** Contrabass parts with *p* dynamics.

73

Fl. 1 *f* *sfz* T

Fl. 2 *f* 11:6 *sfz* T

Es. Cl. *f* 10:6 *f*

B. Cl. *sfz* *sfz* *p* *f*

B. Sx. *sfz* *sfz* *p* *f* 5

Bsn. *sfz* *sfz* *p* *f* 6

Perc. 73 *f*

Acc. 73

Pno. *f* *sfz* *f marcato*

Vln. 1 *arco* *f* 3

Vln. 2 *arco* *f* 8:6

Vla. 1 *arco* *f* 7:6

Vla. 2 *arco* *f*

Vc. 1 *ff*

Vc. 2 *ff*

Cb. 1 *ff* 3

Cb. 2 *ff*

Faster (♩=120)

Fl. 1

Fl. 2

Es. Cl.

B. Cl.

B. Sx.

Bsn.

Perc.

Acc.

Faster (♩=120)

Pno.

Faster (♩=120)

Vln. 1

Vln. 2

Vla. 1

Vla. 2

Vc. 1

Vc. 2

Cb. 1

Cb. 2

This page of a musical score, numbered 68, contains parts for various instruments. The woodwind section includes Flute 1 and 2 (Fl. 1, Fl. 2), E♭ Clarinet (E♭ Cl.), B♭ Clarinet (B. Cl.), Bassoon (Bsn.), and Percussion (Perc.). The string section includes Violin 1 and 2 (Vln. 1, Vln. 2), Viola 1 and 2 (Vla. 1, Vla. 2), Violoncello 1 and 2 (Vc. 1, Vc. 2), and Contrabass 1 and 2 (Cb. 1, Cb. 2). The piano part (Pno.) is also present. The score is written in 2/4 time and features a variety of dynamics, including *sfz*, *ff*, and *fff*. Performance instructions such as "roar flutter" are included for the flutes. The piano part includes a 15th fingering (*15^{ma}*) and a 5th fingering (*5th*). The percussion part features a rhythmic pattern with triplets and accents. The string parts include various articulations and dynamics, with some parts marked *ff* and others *sfz*. The woodwind parts also feature various articulations and dynamics, with some parts marked *ff* and others *sfz*. The overall texture is dense and dynamic, with a focus on rhythmic patterns and articulation.

Fl. 1 *ff* *mf* *f* *tenuto*

Fl. 2 *mf* *mp* *f* *tenuto*

Es. Cl. *ff* *pp* *mp* *f* *tenuto*

B. Cl. *p*

B. Sx. *p*

Bsn. *mp*

Perc. *p* *p* *sfz*

Acc. *f* *n*

Pno. *marcato mp secco*

Vln. 1 *pizz.* *p* *arco* *p < sfz*

Vln. 2 *p < sfz*

Vla. 1 *p < sfz*

Vla. 2 *p < sfz*

Vc. 1 *p* *p < sfz*

Vc. 2 *pizz.* *p* *arco* *p < sfz*

Cb. 1 *p < sfz*

Cb. 2 *p < sfz*

This page of a musical score covers measures 97 to 102. The instruments and their parts are as follows:

- Fl. 1 & 2:** Flute parts with dynamics *f*, *mp*, and *sfz*. Trills (T) are indicated.
- Es. Cl.:** E-flat Clarinet part with dynamics *f* and *mp*.
- B. Cl.:** Bass Clarinet part with a triplet and dynamic *p*.
- B. Sx.:** Bass Saxophone part with a triplet and dynamic *p*.
- Bsn.:** Bassoon part with a triplet and dynamic *p*.
- Perc.:** Percussion part with dynamics *p*, *ff*, *sfz*, and *f*.
- Acc.:** Accordion part with dynamics *mp < ff* and *ff*.
- Pno.:** Piano part with dynamics *mp*, *f*, and *p*. Includes octaves (*8^{va}*, *8^{vb}*) and triplets.
- Vln. 1 & 2:** Violin parts with *pizz.* and *arco* markings, dynamics *f*, *mp*, *p*, and *col legno battuto*.
- Vla. 1 & 2:** Viola parts with dynamics *mp*, *p*, and *sfz*.
- Vc. 1 & 2:** Violoncello parts with *pizz.* and *arco* markings, dynamics *mf*, *p*, and *f*.
- Cb. 1 & 2:** Contrabass parts with *pizz.* and *arco* markings, dynamics *mf*, *p*, and *mp*.

104

Fl. 1 *mp*

Fl. 2 *mf*

Es. Cl. *mp* *f*

B. Cl. *mf*

B. Sx. *mf* *mp*

Bsn. *mf* *p*

Perc. *sfz* *f* *mp* *f*

Acc. *f*

Pno. *mp* *ff* *mp* *mp* *f* *mp*

Vln. 1 *sfz* *pp* *mp* *f*

Vln. 2 *pp* *mp* *f*

Vla. 1 *pp* *mp* *f*

Vla. 2 *pp* *mp* *f*

Vc. 1 *sfz*

Vc. 2 *sfz*

Cb. 1

Cb. 2 *mf*

8va

T

sul pont. arco

sul pont.

sul pont. arco

sul pont. arco

109

Fl. 1 *p*

Fl. 2

E♭ Cl. *mf* *p* *p*

B. Cl. *p*

B. Sx. *p*

Bsn. *mf* *p* *p*

Perc. *mp* *f* *sf* *p* *mf < ff* *mf*

Acc.

Pno. *f* *mp* *ff* *pp* *ff* *pp* *15^{ma}*

Vln. 1 *f* *f* *sfz* *ppp* *glissando*

Vln. 2 *f* *sfz* *ppp*

Vla. 1 *pizz.* *mp* *arco scratch tone* *f*

Vla. 2 *pizz.* *mp* *arco scratch tone* *f*

Vc. 1 *sfz* *sfz*

Vc. 2 *pizz.* *mp*

Cb. 1

Cb. 2

114

Fl. 1 *sf* *ff*

Fl. 2 *p*

Es. Cl. *sotto voce* *ppp*

B. Cl.

B. Sx.

Bsn.

114

Perc. *p* *mp* *pp* *mp* *metal beater*

114

Acc.

114 (15^{ma})

Pno. *8^{va}*

114

Vln. 1 *p*

Vln. 2 *p*

Vla. 1

Vla. 2

Vc. 1

Vc. 2

Cb. 1

Cb. 2

Fl. 1 *ppp* *f* *f*

Fl. 2 *ppp* *f* *f*

Es. Cl. *sotto voce* *ppp* *f* *f*

B. Cl.

B. Sx. *sfz* *sfz* *f*

Bsn. *sfz* *sfz*

Perc. *p*

Acc. *ff* *ff*

Pno. *ff*

Vln. 1 *f* *f*

Vln. 2 *f* *f*

Vla. 1 *f* *f*

Vla. 2 *f* *f*

Vc. 1 *sfz*

Vc. 2 *sfz*

Cb. 1 *sfz* *pizz.*

Cb. 2 *sfz* *pizz.*

119 *ppp* *f* *f*

119 *ppp* *f* *f*

119 *sotto voce* *ppp* *f* *f*

119 *p*

119 *ff* *ff*

119 *ff*

119 *f* *f*

119 *f* *f*

119 *f* *f*

119 *f* *f*

119 *sfz* *sfz*

119 *sfz* *pizz.*

119 *sfz* *pizz.*

74 75 76 77

Fl. 1 *f* *ff* To harmonica

Fl. 2 *f* *ff* To harmonica

Es. Cl. *f* *ff* To harmonica

B. Cl. *ff* To harmonica

B. Sx. *ff* To harmonica

Bsn. *ff* To harmonica

Perc. 132

Acc. 132 *ff*

Pno. 132 *8^{va}* *15^{ma}* *cresc.* *8^{va}*

Vln. 1 132 *ff*

Vln. 2 *ff*

Vla. 1 *marcato* *ff*

Vla. 2 *marcato* *ff*

Vc. 1 *marcato* *ff*

Vc. 2 *marcato* *ff*

Cb. 1 *arco* *ff*

Cb. 2 *arco* *ff*

78 Very fast (♩=144-160 or faster)

135

Fl. 1

Fl. 2

Es. Cl.

B. Cl.

B. Sx.

Bsn.

Perc.

135

fff

Acc.

135

fff

p

fff

Very fast (♩=144-160 or faster)

135

135

fff

fff

martellato

fff

fff

Very fast (♩=144-160 or faster)

135

Vln. 1

fff

gliss.

ff

Vln. 2

fff

microtonal glissando trill

ff

Vla. 1

détaché

ff

Vla. 2

gliss.

ff

Vc. 1

scratch tone

ff

ff

ff

ff

Vc. 2

scratch tone

ff

ff

ff

ff

Cb. 1

fffz

fffz

fffz

fffz

Cb. 2

fffz

fffz

fffz

fffz

149

Fl. 1 *ff*

Fl. 2 *ff*

E♭ Cl. *ff* 5

B. Cl. *ff* 3

B. Sx. *ff*

Bsn. *ff*

Perc. 149

Acc. 149 3

Pno. 149 *15^{ma}* *martellato* *ffz* *ffff* *8^{va}*

Vln. 1 *fff*

Vln. 2 *fff*

Vla. 1 *fff*

Vla. 2 *fff* 3

Vc. 1 *fff* 5

Vc. 2 *fff* 3

Cb. 1 *fff*

Cb. 2 *fff*

This page of a musical score, numbered 82, covers measures 153 to 155. The score is arranged in a standard orchestral format with multiple staves for different instruments. The key signature is one sharp (F#) and the time signature is 2/4. The instruments and their parts are as follows:

- Fl. 1 & Fl. 2:** Flute parts with long notes and slurs.
- Es. Cl. (E-flat Clarinet):** Features a quintuplet (5) in measure 153.
- B. Cl. (B-flat Clarinet):** Features a triplet (3) in measure 153.
- B. Sx. (Baritone Saxophone):** Plays sustained notes.
- Bsn. (Bassoon):** Plays sustained notes.
- Perc. (Percussion):** Features a rhythmic pattern of eighth notes.
- Acc. (Accordion):** Features a triplet (3) in measure 153 and a dynamic marking of *fff* in measure 155.
- Pno. (Piano):** Features a steady eighth-note accompaniment in both hands.
- Vln. 1 & Vln. 2 (Violins):** Violin 1 has a melodic line, while Violin 2 has a sustained note.
- Vla. 1 & Vla. 2 (Violas):** Violin 2 has a melodic line, while Violin 1 has a sustained note.
- Vc. 1 & Vc. 2 (Violas):** Violin 1 has a quintuplet (5) in measure 153, while Violin 2 has a triplet (3).
- Cb. 1 & Cb. 2 (Cellos/Double Basses):** Play sustained notes.